

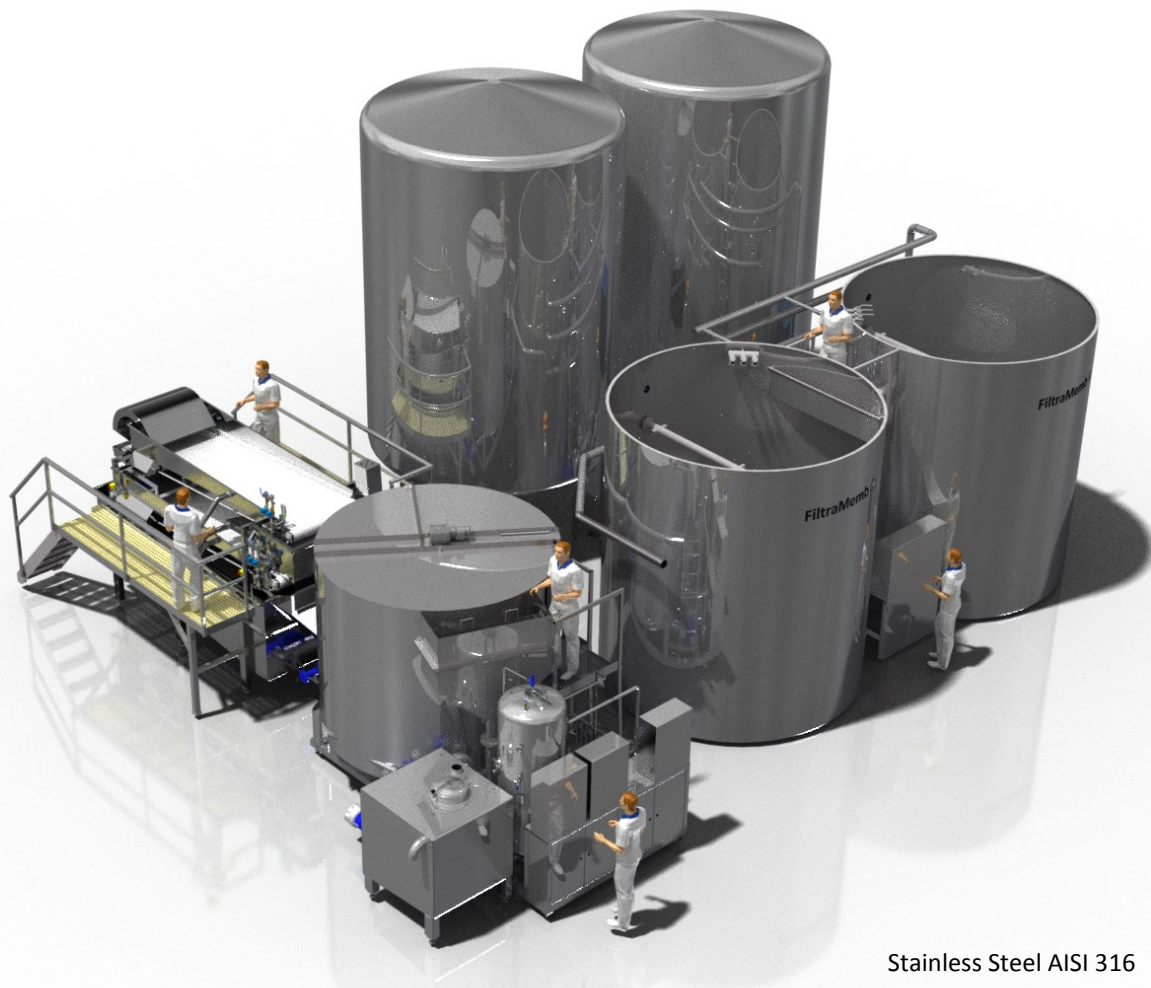
FiltraCon®

WW 50 Waste Water Treatment Plant

FiltraFlo®

FiltraMemb®

FiltraUV®



Stainless Steel AISI 316



DANTECH
DANISH TECHNOLOGY CENTER

Complete Standard Modular Waste Water Treatment Plant

50 m³/Hr.

Produced in AISI 316 Stainless Steel

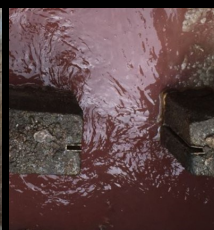
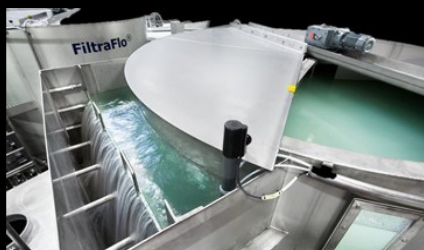
INCL

- > Control Unit
- > Automatic flow adjusting
- > Automatic valves
- > Automatic Hydrofor System
- > Automatic Scraper on top
- > Automatic Effluent Outlet Control -Registration -Sampling Computer System - data outlet—pH
- > Uniquely designed inlet and outlet

WW 50 FiltraCon® - FiltraFlo® C 80-FL1 - FiltraMemb® - FiltraUV®

Complete Green Waste Water Treatment Plant 50 m3/Hr.

> μ Filtration System > Micro Air Bobble Flotation System > Recycle System > Nano Filtration System > UV Filtration



Waste Water before Treatment

Waste Water after Treatment

Dantech Danish Technology Center have over 30 years developed Cleaner Technology - Filtration - Flotation - Waste Water Treatment for the Food Industry and have to day STANDARD MODULAR SYSTEM UNIT for the WASTE WATER TREATMENT where we TURN POLLUTION INTO PROFIT. FiltraFlo® Flotation modular Units for 10–20–50–80 m3/Hr

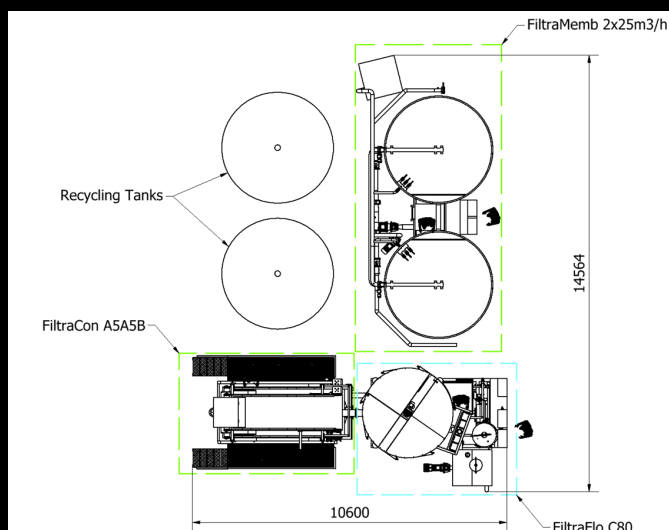
With interconnections we can deliver the capacity our customer need connecting the Standard Modular Unit in series or parallel (recycling and taking care of By-Products > without Chemical Treatment).



FiltraMemb®



Above is a complete Compact Automatic Filtration-Flotation System - a Clean Technology Closed System that can be placed closed to the processing areas due to its relatively small footprint. Easy and quick to Install—Tested before delivery - Incl. Interconnections



DANTECH
DANISH TECHNOLOGY CENTER

General Guide :

if you contact us with information on your waste water effluent COD, S/S, FOG (FAT), N, P in mg/l and pH and Flow m3/hr. peak Flow m3/Hr and total m3/day, and your local council directives for effluent outlet, we can offer you a feasibility study for the setup.

The Capacity for Filtralco®: 50 m3/Hr.

DANTECH

Danish Technology Center

Vedbaek Strandvej 425 - DK-2950 - Denmark - Tel. +45 45 76 36 36